

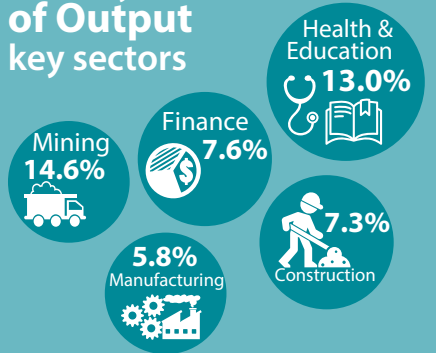
# Composition of the Australian Economy

5 January 2023

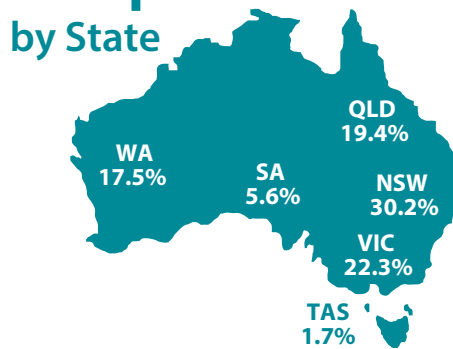
## SNAPSHOT



### Industry Share of Output key sectors



### Output Share by State



Population

**26.0 million**

**1.1%** annual growth

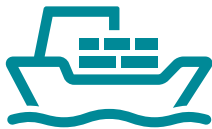
### Export Share by type

Resources: **68.2%**

Services: **11.4%**

Rural: **11.5%**

Manufactured: **6.5%**



### Export Share by destination

CHINA: **36.0%**

JAPAN: **12.2%**

EU: **3.6%**

KOREA: **7.1%**

US: **4.6%**

INDIA: **4.7%**



### Employment to population ratio

**64.5%**



Average Price of Residential Dwellings **\$890,000**



### Household wealth

as a share of income



**884%**

### Household debt

as a share of income

**188%**



Data in this snapshot are the latest available as at 5 January 2023.



RESERVE BANK OF AUSTRALIA

 [www.rba.gov.au](http://www.rba.gov.au)

 @RBAInfo

 @ReserveBankAU

 @ReserveBankAU

 Reserve Bank of Australia