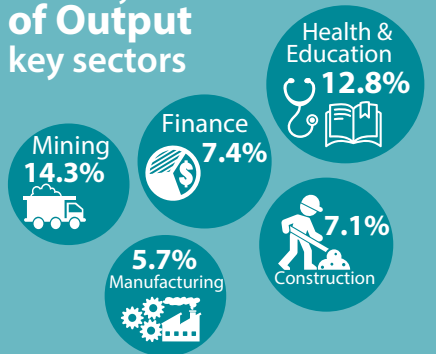


# Composition of the Australian Economy

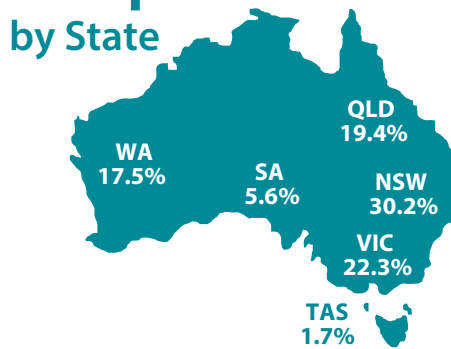
SNAPSHOT 9 November 2023



## Industry Share of Output key sectors



## Output Share by State



Population

**26.5 million**

**2.2%** annual growth

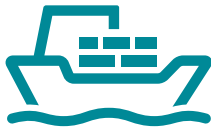
## Export Share by type

Resources: **63.3%**

Services: **16.5%**

Rural: **10.8%**

Manufactured: **7.2%**



## Export Share by destination

CHINA: 27.3%  
JAPAN: 17.5%  
EU: 4.7%  
KOREA: 7.8%  
US: 4.5%  
INDIA: 5.2%



## Employment to population ratio

to population ratio

**64.4%**



Average Price of Residential Dwellings **\$913,000**



## Household wealth

as a share of income



**896%**

## Household debt

as a share of income

**187%**



Data in this snapshot are the latest available as at 9 November 2023.



RESERVE BANK OF AUSTRALIA

[www.rba.gov.au](http://www.rba.gov.au)

[@RBAInfo](https://twitter.com/RBAInfo)

[@ReserveBankAU](https://facebook.com/ReserveBankAU)

[@ReserveBankAU](https://instagram.com/ReserveBankAU)

[Reserve Bank of Australia](https://linkedin.com/company/ReserveBankofAustralia)