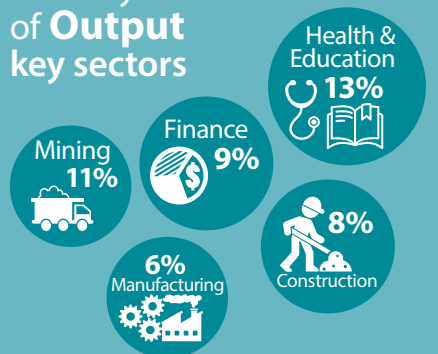


Composition of the Australian Economy

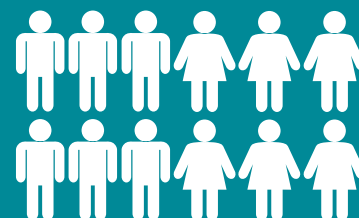
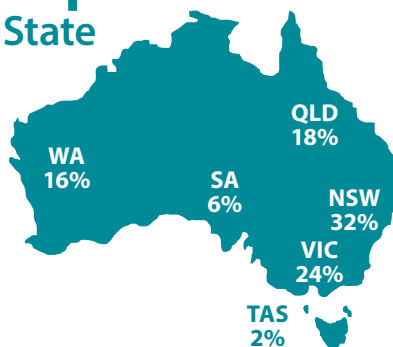
SNAPSHOT 8 February 2021



Industry Share of Output key sectors



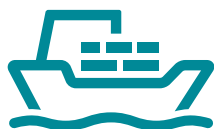
Output Share by State



Population
26 million
1.3% annual growth

Export Share by type

Resources: **63%**
Services: **15%**
Rural: **9%**
Manufactured: **9%**



Export Share by destination

CHINA: **34%**
JAPAN: **12%**
EU: **8%**
KOREA: **6%**
US: **5%**
INDIA: **4%**



Employment to population ratio

62%



Average Price of Residential Dwellings
\$690,000



Household wealth

as a share of income



765%

Household debt

as a share of income

180%



Data in this snapshot are the latest available as at 8 February 2021.



RESERVE BANK OF AUSTRALIA

www.rba.gov.au

[@RBAInfo](https://twitter.com/RBAInfo)

[@ReserveBankAU](https://www.facebook.com/ReserveBankAU)

[@ReserveBankAU](https://www.instagram.com/ReserveBankAU)

[Reserve Bank of Australia](https://www.linkedin.com/company/ReserveBankofAustralia)