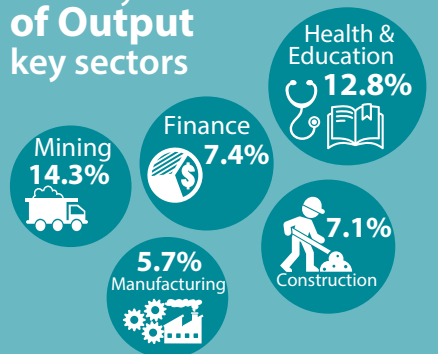


# Composition of the Australian Economy

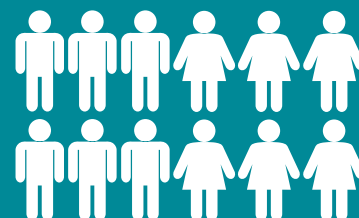
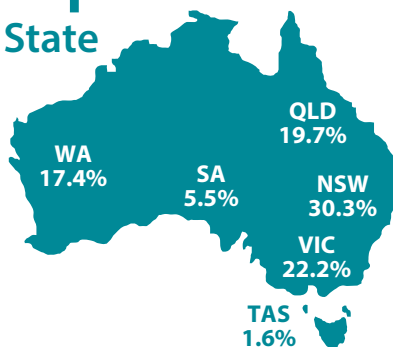
## SNAPSHOT 8 February 2024



### Industry Share of Output key sectors



### Output Share by State



Population  
**26.6 million**  
**2.4%** annual growth

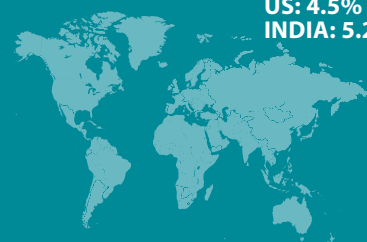
### Export Share by type

Resources: **61.5%**  
Services: **17.6%**  
Rural: **11.1%**  
Manufactured: **7.4%**



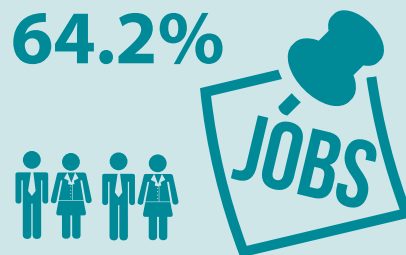
### Export Share by destination

CHINA: **27.3%**  
JAPAN: **17.5%**  
EU: **4.7%**  
KOREA: **7.8%**  
US: **4.5%**  
INDIA: **5.2%**



### Employment to population ratio

**64.2%**



Average Price of Residential Dwellings  
**\$925,000**



### Household wealth

as a share of income



Household debt  
as a share of income **185%**



Data in this snapshot are the latest available as at 8 February 2024.



RESERVE BANK OF AUSTRALIA



[www.rba.gov.au](http://www.rba.gov.au)



@RBAInfo



@ReserveBankAU



@ReserveBankAU



Reserve Bank of Australia