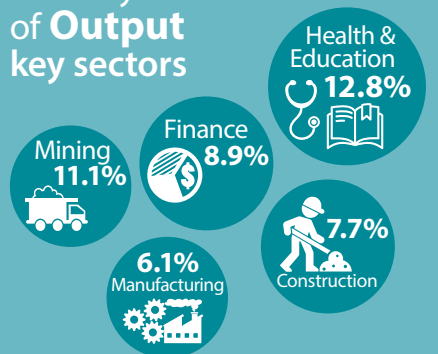


# Composition of the Australian Economy

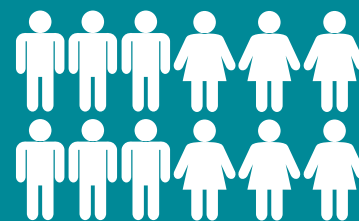
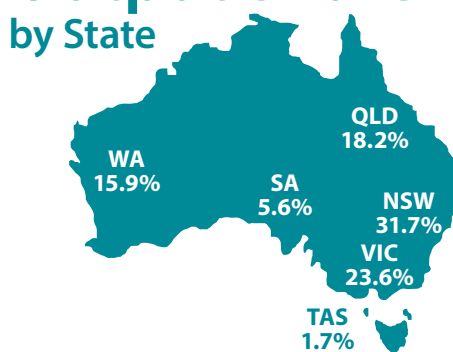
## SNAPSHOT 10 September 2021



### Industry Share of Output key sectors



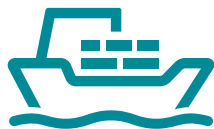
### Output Share by State



Population  
**25.7 million**  
0.5% annual growth

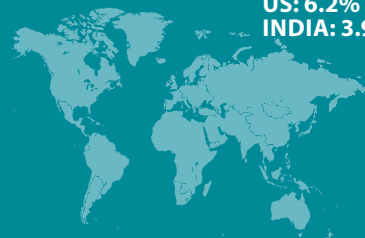
### Export Share by type

Resources: **67.4%**  
Services: **11.7%**  
Rural: **10.5%**  
Manufactured: **7.8%**



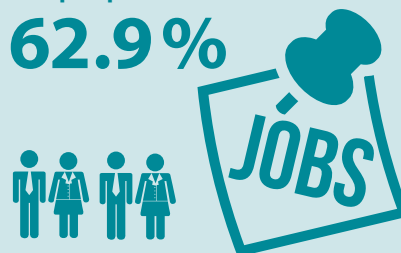
### Export Share by destination

CHINA: **36.5%**  
JAPAN: **10.4%**  
EU: **3.8%**  
KOREA: **5.6%**  
US: **6.2%**  
INDIA: **3.9%**



### Employment to population ratio

**62.9%**



Average Price of Residential Dwellings  
**\$779,000**



### Household wealth

as a share of income



**843%**

### Household debt

as a share of income

**181%**



Data in this snapshot are the latest available as at 10 September 2021.



RESERVE BANK OF AUSTRALIA

[www.rba.gov.au](http://www.rba.gov.au)

@RBAInfo

@ReserveBankAU

@ReserveBankAU

Reserve Bank of Australia