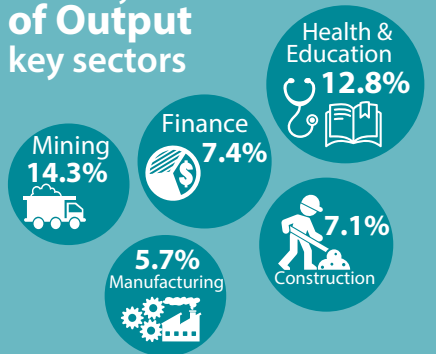


Composition of the Australian Economy

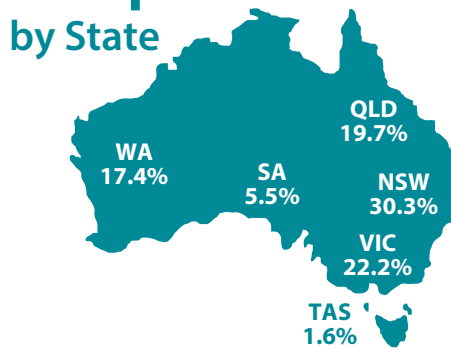
SNAPSHOT 21 March 2024



Industry Share of Output key sectors



Output Share by State



Population

26.6 million

2.4% annual growth

Export Share by type

Resources: **62.5%**

Services: **18.1%**

Rural: **10.3%**

Manufactured: **6.9%**



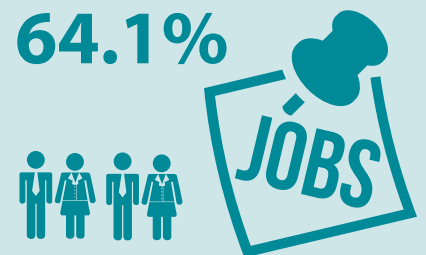
Export Share by destination

CHINA: **27.3%**
JAPAN: **17.5%**
EU: **4.7%**
KOREA: **7.8%**
US: **4.5%**
INDIA: **5.2%**



Employment to population ratio

64.1%



Average Price of Residential Dwellings **\$934,000**



Household wealth

as a share of income



Household debt

as a share of income

186%



Data in this snapshot are the latest available as at 21 March 2024.



RESERVE BANK OF AUSTRALIA

www.rba.gov.au

[@RBAInfo](https://twitter.com/RBAInfo)

[@ReserveBankAU](https://facebook.com/ReserveBankAU)

[@ReserveBankAU](https://instagram.com/ReserveBankAU)

[Reserve Bank of Australia](https://linkedin.com/company/ReserveBankofAustralia)