



RESERVE BANK OF AUSTRALIA

# The Labour Market

## Alex Heath (Head of Economic Analysis)

Education





# Labour Market

Seasonally adjusted



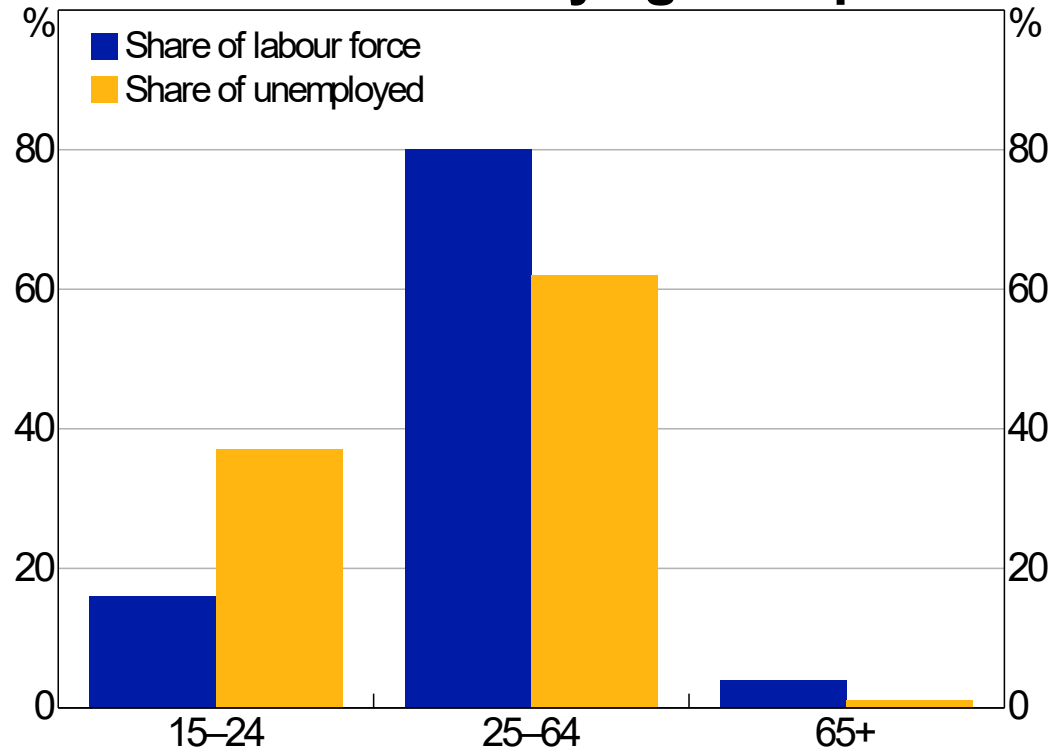
\* Hours-based measure

\*\* Trend unemployment in dark blue

Sources: ABS; RBA



## Labour Market by Age Group\*



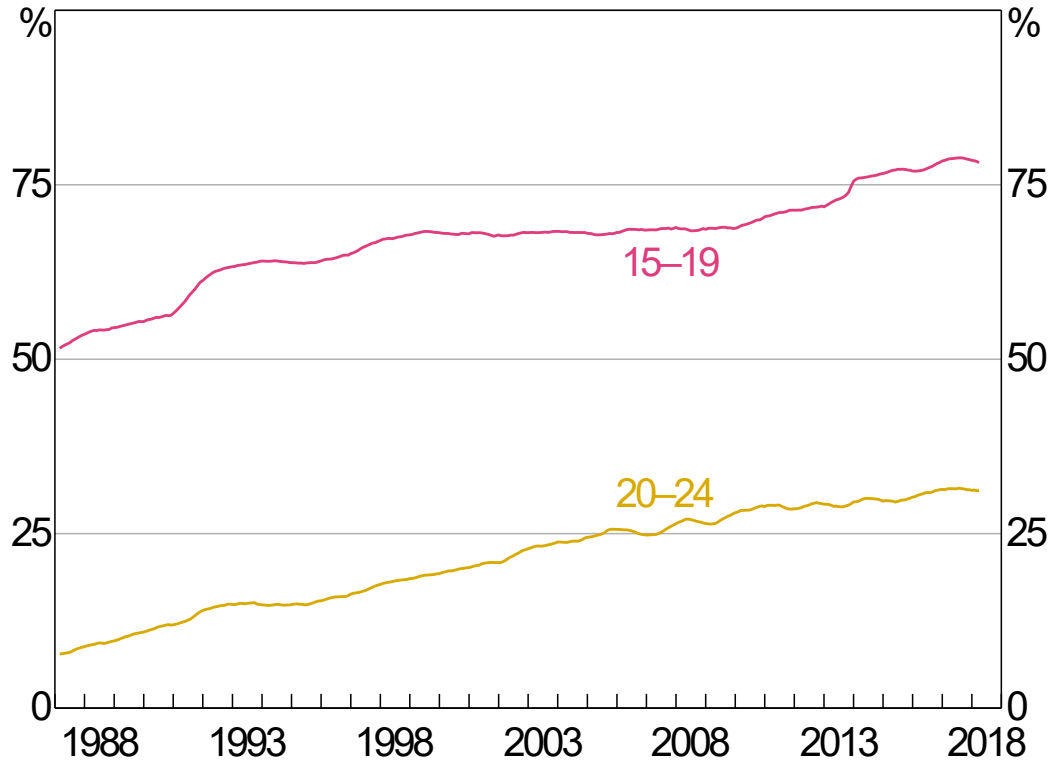
\* 2017 average

Source: ABS



# Participation in Full-time Education

Smoothed

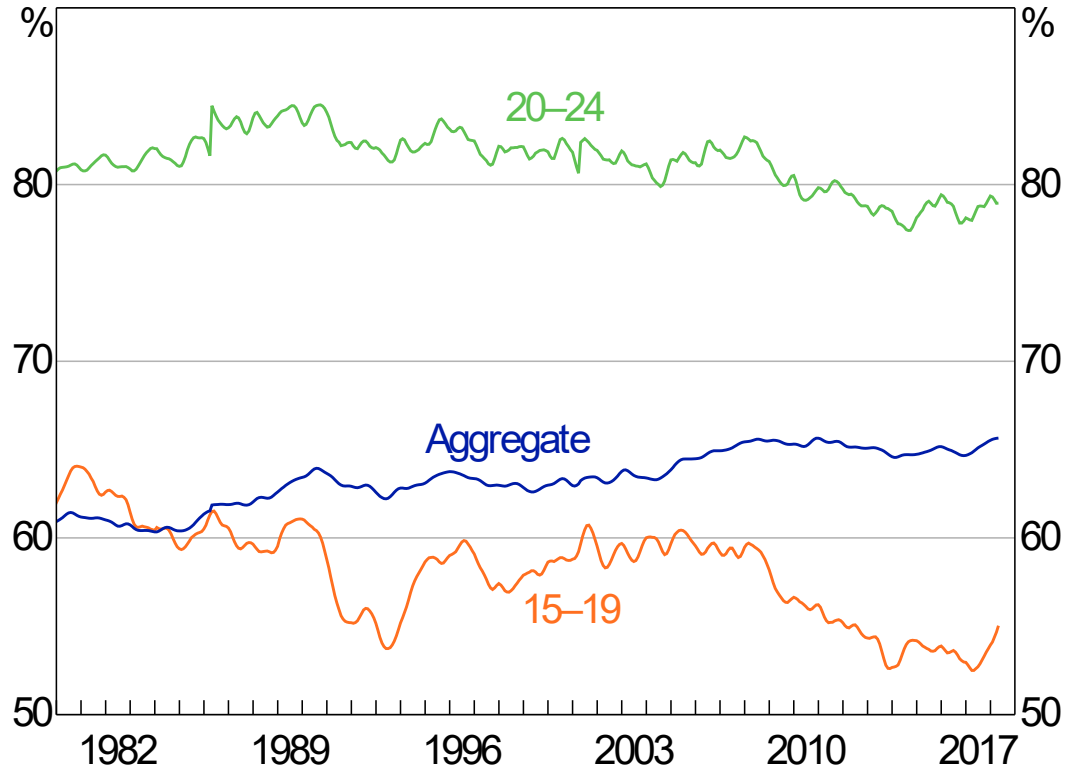


Sources: ABS; RBA



# Participation Rate

Trend

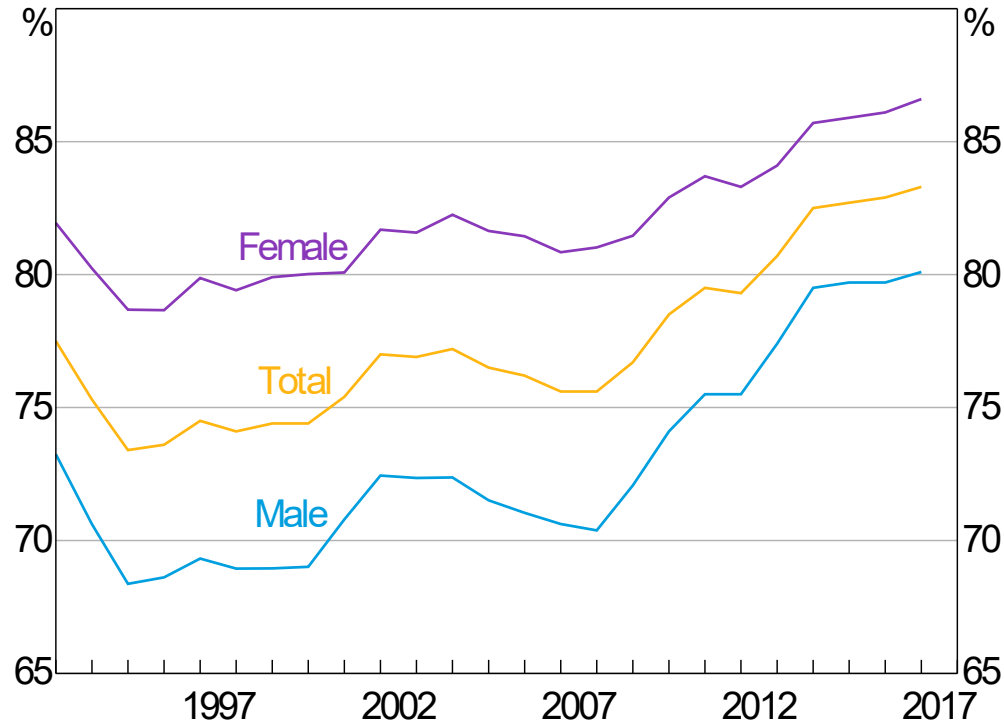


Sources: ABS; RBA



# Apparent Retention Rate\*

Years 10 to 12



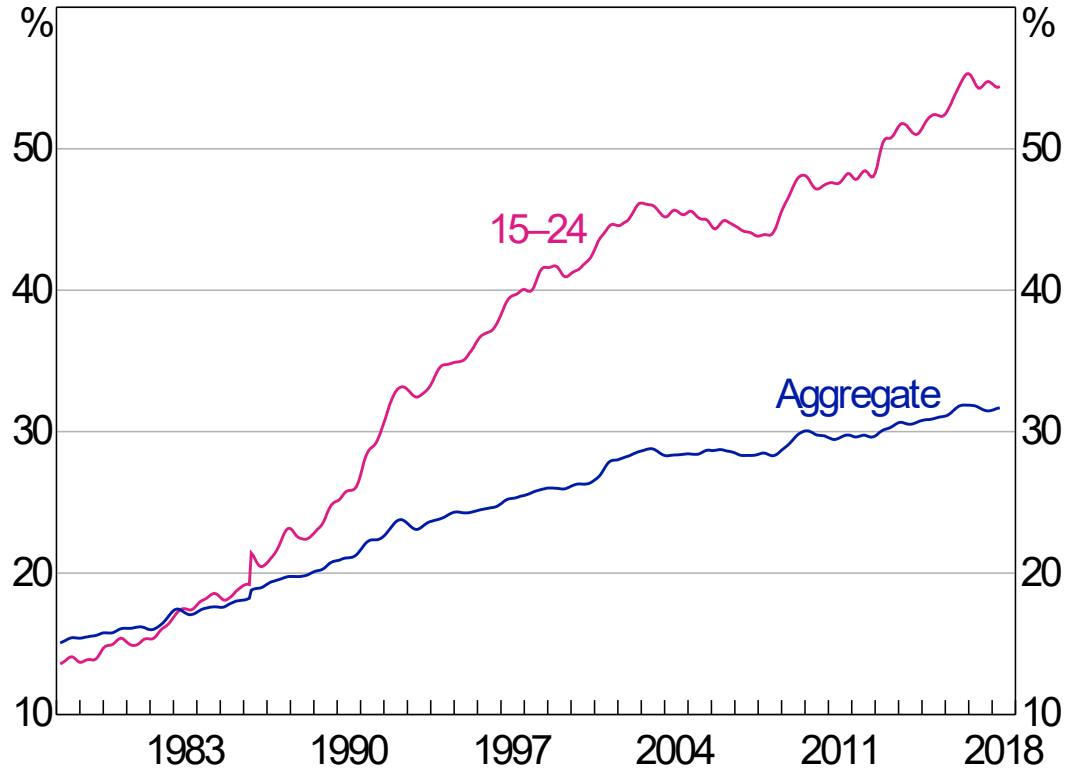
\* Proportion of full-time Year 10 students that remained in the schooling system until Year 12

Source: ABS



# Part-time Share of Employment

Trend



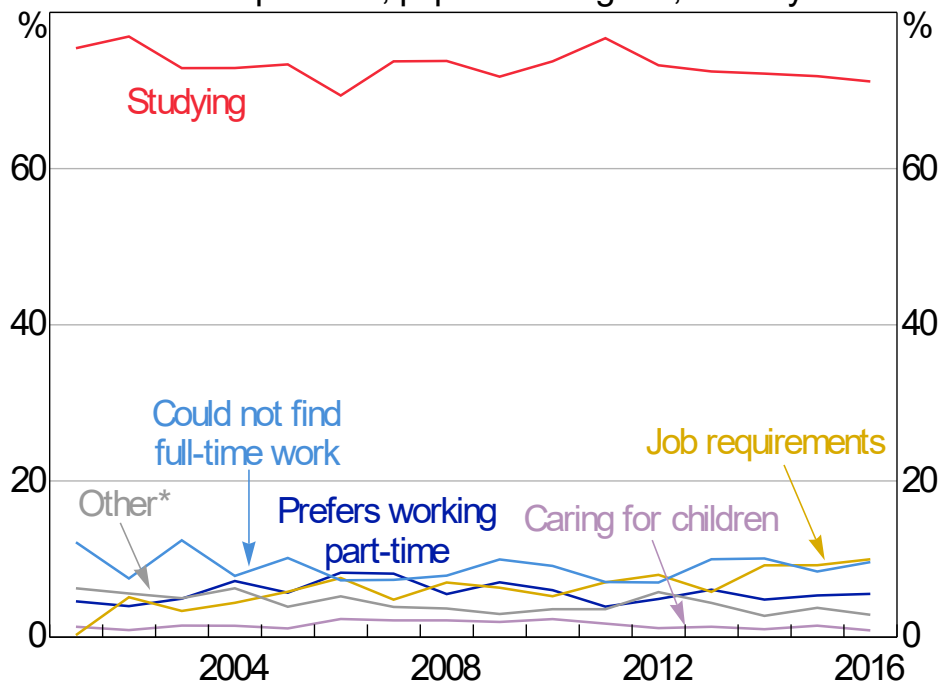
Source: ABS





# Main Reasons for Working Part-time

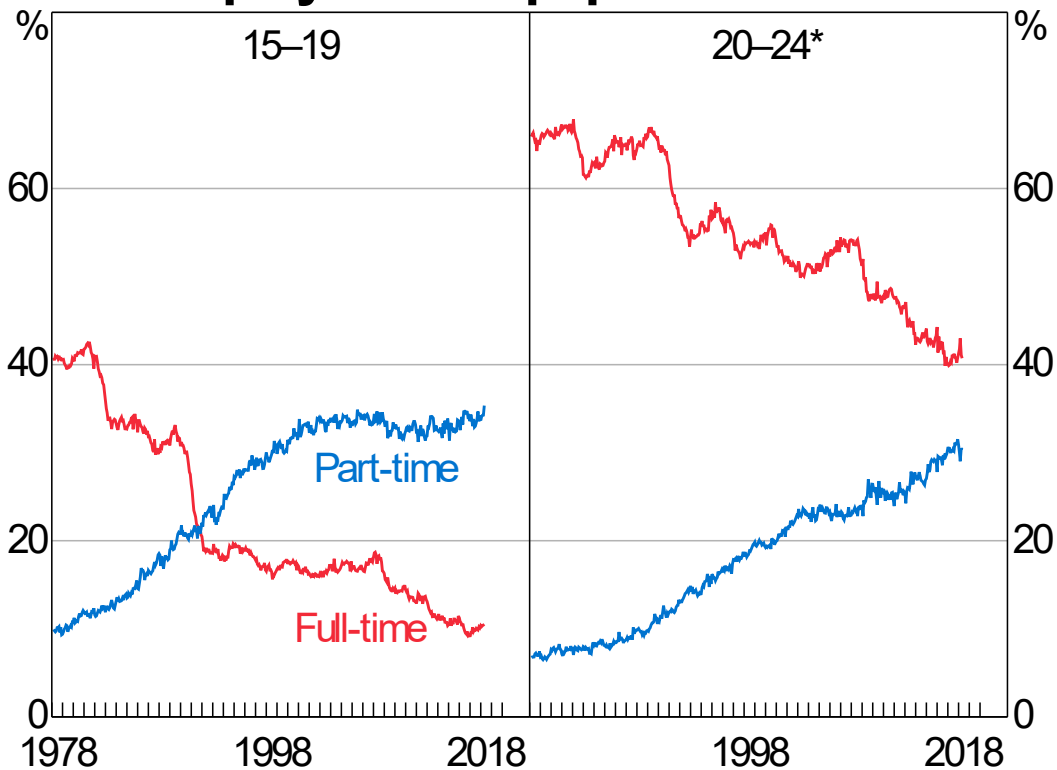
Share of respondents, population weighted, 15–24 years



\* Includes illness or disability; caring responsibilities; personal or family reasons; voluntary work; attracted to part-time pay premium; welfare payments or pension affected; starting a business



# Employment-to-population Ratio



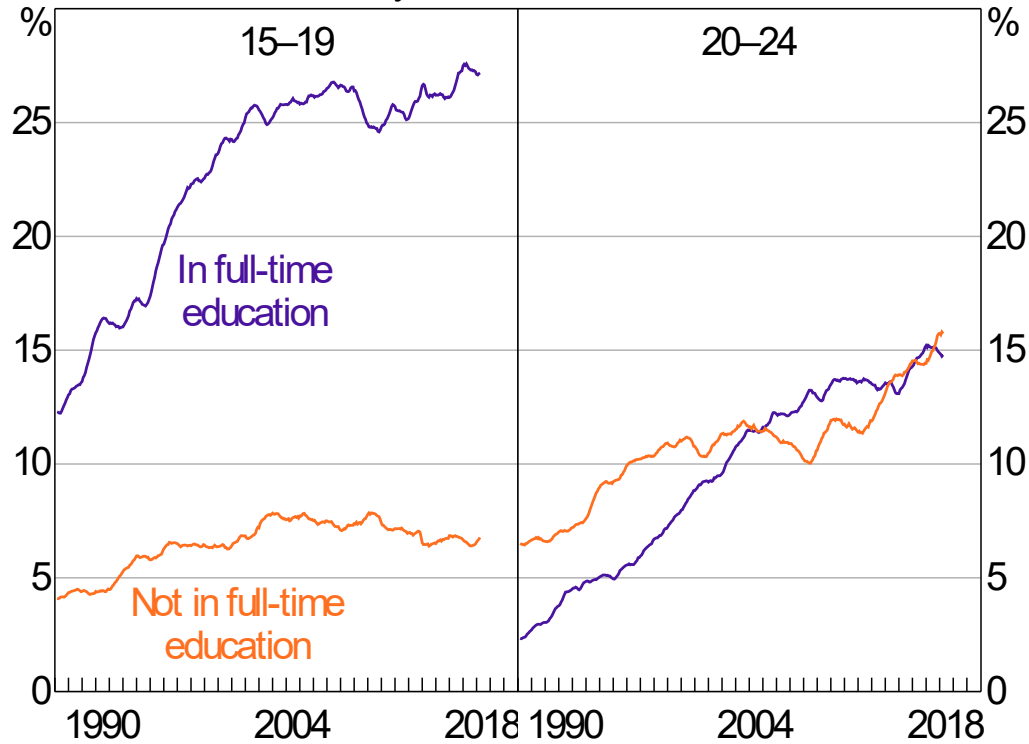
\* Seasonally adjusted using X-12

Sources: ABS; RBA



# Part-time Employment-to-population Ratio\*

By education status



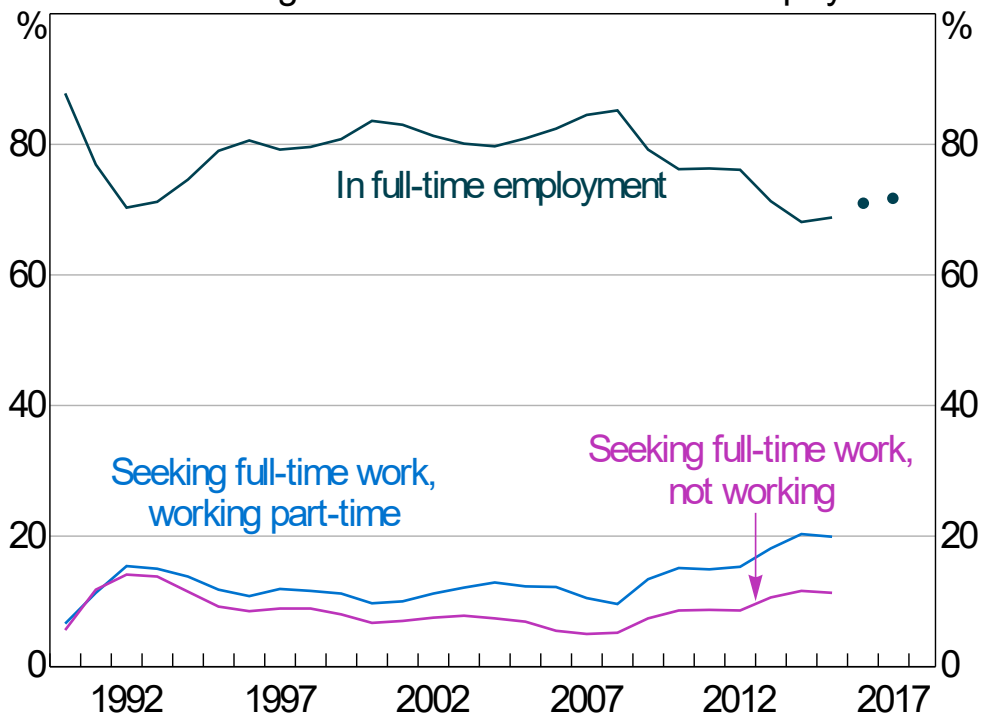
\* Smoothed

Sources: ABS; RBA



# Employment Status of Graduates\*

Share of total graduates available for full-time employment



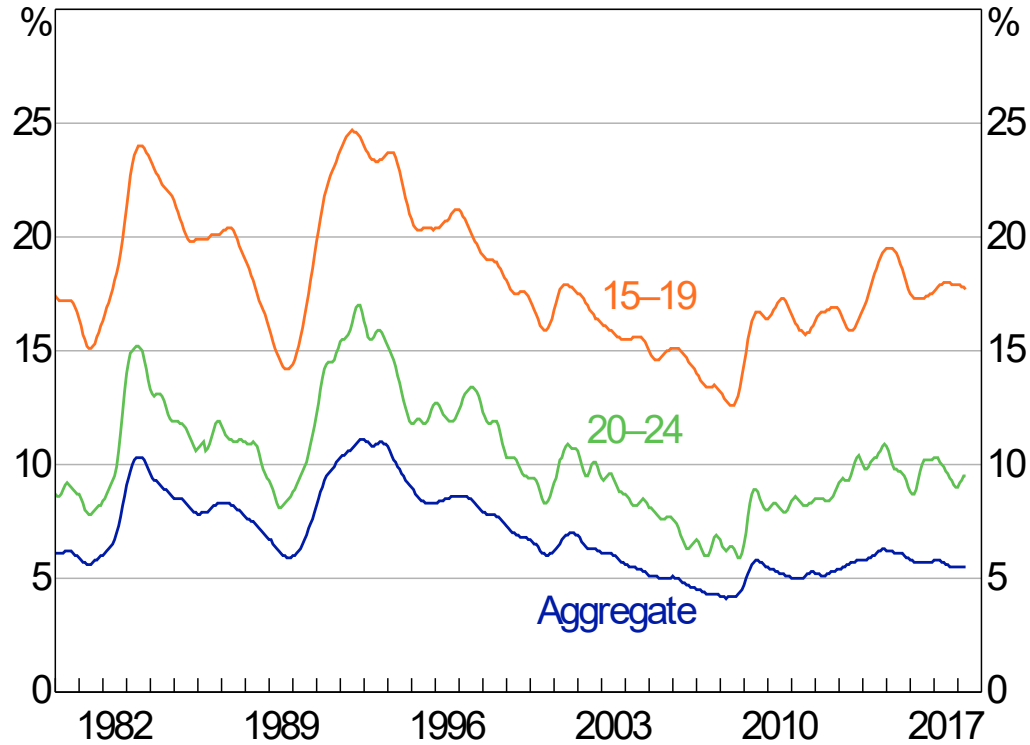
\* Bachelor degree graduates available for full-time employment; Australian Graduate Survey indicated by lines; Quality Indicators for Learning and Teaching (QILT) indicated by dots

Sources: Graduate Careers Australia; QILT



# Unemployment Rate

Trend

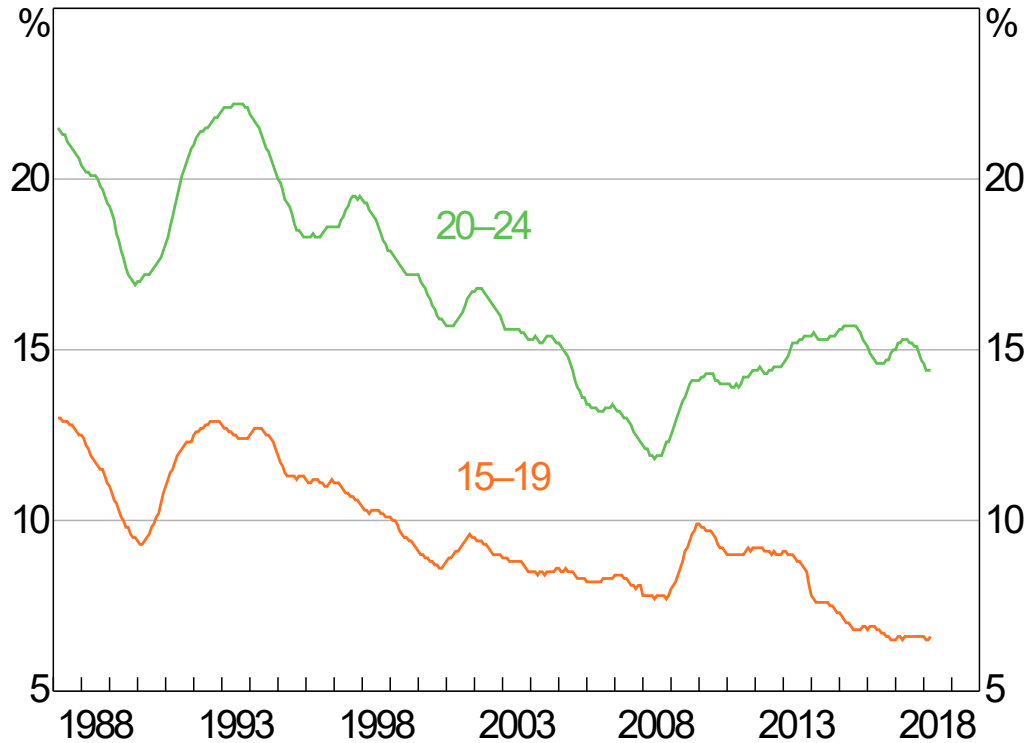


Sources: ABS; RBA



# NEET Rate\*

Smoothed



\* Not engaged in employment, full-time education or training

Sources: ABS; RBA