

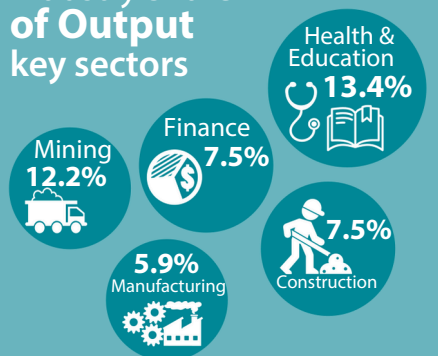
Composition of the Australian Economy

02 April 2025

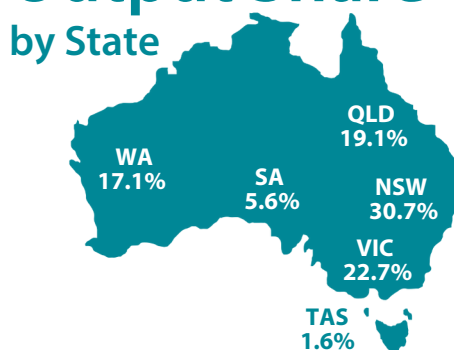
SNAPSHOT



Industry Share of Output key sectors



Output Share by State



Population

27.3 million

1.8% annual growth

Export Share by type

Resources: **58.7%**
Services: **20.3%**
Rural: **11.4%**
Manufactured: **8.1%**



Export Share by destination

CHINA: **32.4%**
JAPAN: **13.1%**
KOREA: **6.3%**
US: **4.9%**
INDIA: **5.2%**



Employment to population ratio

64.1%



Average Price of Residential Dwellings
\$976,800



Household wealth

as a share of income



898%

Household debt

as a share of income

182%



Data in this snapshot are the latest available as at 02 April 2025



RESERVE BANK OF AUSTRALIA



www.rba.gov.au



@RBAInfo



@ReserveBankAU



@ReserveBankAU



Reserve Bank of Australia